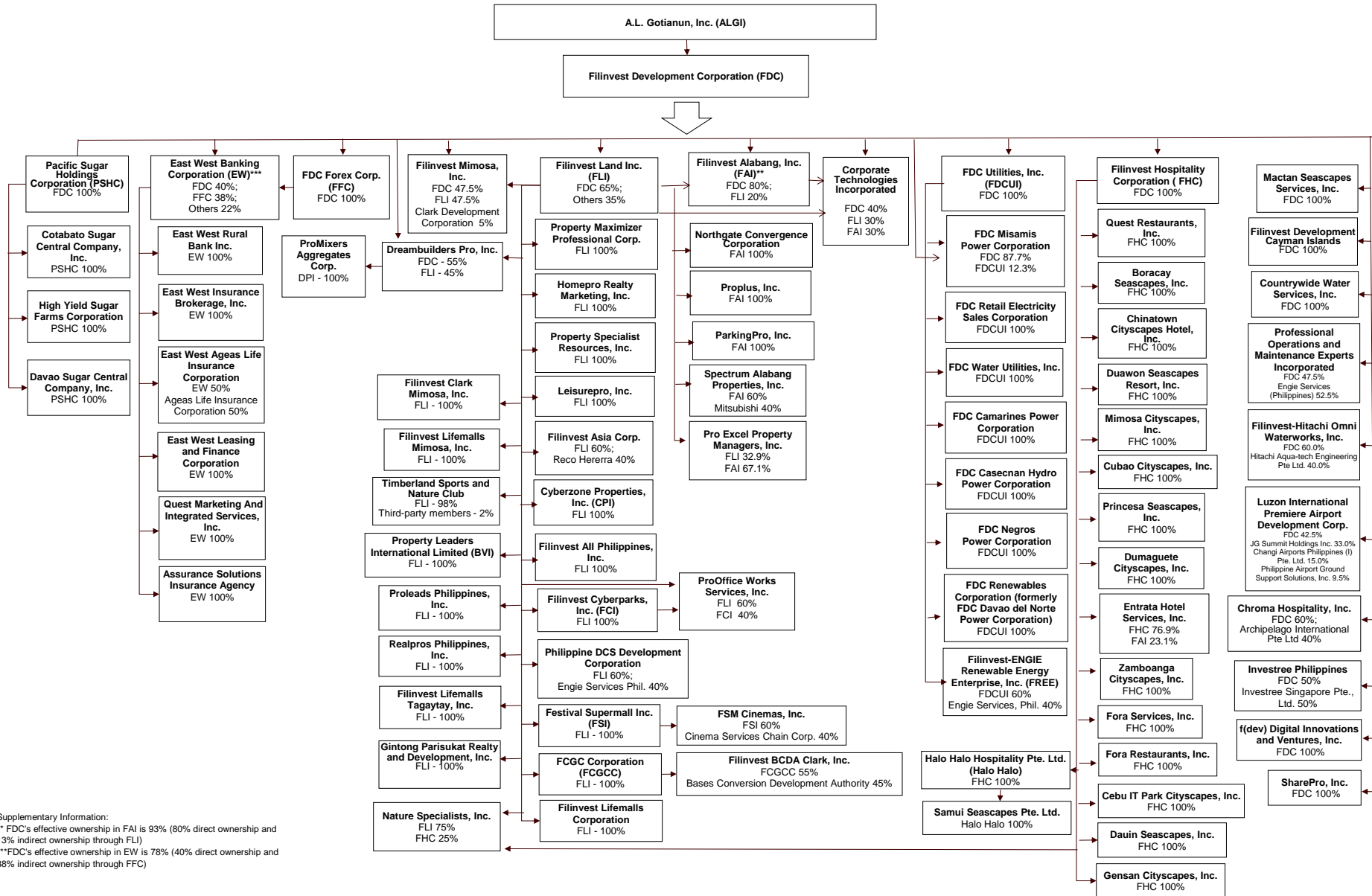


A.L. GOTIANUN, INC.
MAP SHOWING THE RELATIONSHIP BETWEEN AND AMONG THE COMPANIES IN THE GROUP, ITS ULTIMATE PARENT, CO-SUBSIDIARIES, JOINT VENTURES AND ASSOCIATES
(As of March 31, 2021)



Supplementary Information:
 ** FDC's effective ownership in FAI is 93% (80% direct ownership and 13% indirect ownership through FLI)
 ***FDC's effective ownership in EW is 78% (40% direct ownership and 38% indirect ownership through FFC)